

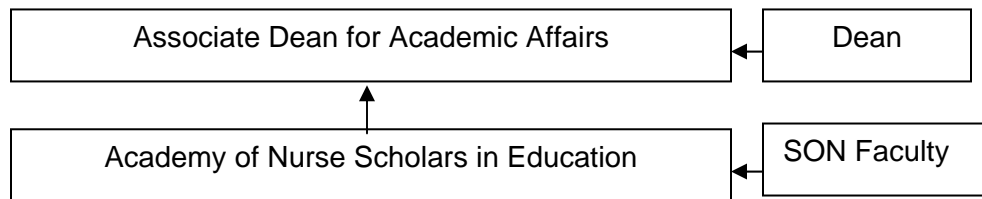
MCG SON Academy of Nurse Scholars in Education

Organizing Committee

Marlene M. Rosenkoetter, PhD, RN, FAAN, Chair
Stephen Gilliam, PhD, RN
Mary Ellen Quinn, PhD, RN
Deborah Smith, DNP, RN
Julia Ball, PhD, RN, University of South Carolina - Aiken
Randy Baker, PhD, RRT, School of Allied Health
Chris White, MD, School of Medicine

1. The Academy of Nurse Scholars in Education (ANSE) is an organization of MCG faculty who have demonstrated excellence in educational activities within the School of Nursing.
2. Goals:
 - To recognize and reward outstanding educators
 - To foster and promote educational excellence, research, scholarship and innovation
 - To promote educational skills and career development within the School of Nursing
 - To enhance faculty career satisfaction by identifying dedicated faculty to serve as role models and mentors
 - To demonstrate the School of Nursing's commitment to quality teaching and learning
3. Structure:

Overview of The Academy of Nurse Scholars in Education (ANSE)
at the Medical College of Georgia



- The ANSE will be administered under the direction of the Associate Dean for Academic Affairs with input from the SON Faculty and the Dean of the School of Nursing.

4. Membership:
 - Membership criteria:
 - Initial membership:
 - All Academy members must be outstanding teachers of nursing students or have significant impact on nursing student education through their educational activity with practicing nurses or Fellows.
 - All Academy members must be doctorally prepared (PhD, DNP, EdD, DNSc, or the equivalent) and a graduate from an accredited institution recognized by the US Department of Education.
 - A maximum of four Fellows will be named in any given academic year.

- Additionally, Members must demonstrate excellence in one or more of the following educational activities:
 - Outstanding accomplishments in curriculum development
 - Outstanding accomplishments in assessment of learner performance
 - Outstanding accomplishments in the advising and/or mentoring of nursing students, residents, and/or faculty
 - Outstanding accomplishments in educational delivery and/or leadership
 - Outstanding record of scholarship
- Faculty applying for ANSE should include activities and accomplishments for the past 5 years (maximum unless it is a significant contribution); have a minimum of two consecutive years of employment at MCG.
- Overview of membership application process:
 - Application for membership in the ANSE will be made by peer-nomination or self-nomination.
 - Nominees will provide documentation of their educational accomplishments in accordance with the criteria and standards for selection (below).
 - Application packets should be sent to the Associate Dean for Academic Affairs
 - Faculty applying for ANSE should include activities and accomplishments for the past 5 years (maximum unless it is a significant contribution)
- Contents of Application Packet:
 - The candidate's personal statement and Educator's Portfolio (EP), which combined should not exceed 10 pages. It must include:
 - A personal statement:
 - i. A discussion of his/her statement of philosophy which includes the following:
 - Teaching
 - Relationships with students, peers, & community
 - Research
 - Practice
 - Profession of nursing
 - ii. A discussion of his/her professional development in education
 - iii. A discussion of his/her anticipated contributions to the goals of the Academy
 - Written recommendations from 3 faculty that include each of the following:
 - Cooperation
 - Collaboration
 - Collegiality
 - Commitment to students, the School & profession
 - Professional competence
 - An Educator's Portfolio containing documentation for each category of educational activity supporting his/her nomination.
 - Direct Teaching (all applicants must include student evaluations in this category)
 - Curriculum Development
 - Assessment of Learner Performance

- Mentoring/Advising
- Educational Delivery/Leadership
- Scholarships and Grants

Supporting documentation should be provided to substantiate the quality or impact of the contributions in each category delineated in the EP.

- A letter of support from the candidate's chair should be requested by the applicant and should address each of the membership criteria, and any release time to fulfill responsibilities of the Academy.
 - The [MCG ANSE Membership Application Checklist](#) should accompany each application.
- Term of membership is 4 years
 - Academy membership may be renewed every four years.
 - After the initial term of membership, Fellows may reapply with an abbreviated application (recommendation from Chair, three faculty, and Educator's Portfolio)
 - Criteria for continued membership in the Academy:
 - Each spring Academy members must submit a one-page report to the Chair of the Academy detailing how their educational activities and their service met the goals of the Academy for the previous year.
 - If members are not maintaining a level of performance consistent with their initial application, they may be withdrawn from active membership by the Committee.
 - Renewal of membership:
 - Academy membership may be renewed every four years. The process of reapplication is the same as initial application.

5. Expectations of Members:

- Membership in the ANSE carries with it the expectation of service to the School of Nursing, the University, the community, and the profession. The type of service can vary, but it should demonstrate each Academy member's commitment to educational and professional excellence, including at the national and/or international levels.

6. Governance and Structure:

- Chair:
 - The Academy will be led by a Chair, elected by actively serving members of the Academy for a 2-year term.
 - The Chair will work closely with the Associate Dean Academic Affairs in planning and implementing Academy activities.
- Steering Committee: The Academy will be directed by a Steering Committee consisting of:
 - Chair of the Academy
 - Immediate Past Chair of the Academy
 - One Fellow (selected by the Academy membership)
 - Ex-officio members:
 - Associate Dean for Academic Affairs
 - Associate Dean for Research
 - Associate Dean for Practice

Administrative support for the Academy will come from the office of the Associate Dean for Academic Affairs. Academic Affairs staff will screen applications for completeness only.

- Membership Committee: An ANSE Membership Committee will evaluate and select a maximum of 4 Fellows in a given academic year for Academy membership.
 - The Membership Committee will consist of 5 current Fellows of the Academy
 - The Chair of the Membership Committee will be the Academy's Immediate Past Chair (or current Chair)
One member of the Membership Committee may also be selected from the alumni or emeritus faculty who have demonstrated significant leadership and scholarship in nursing and nursing education
 - One member of the Membership Committee may also be selected representing excellence in practice external to the SON
- Other Committees: It is anticipated that as the Academy grows in size and significance, additional leadership roles and committee structures will be required. For example:
 - Programs committee to schedule educational presentations and guest speakers
 - Nominating committee to screen nominations for completeness
 - Educational grant awards committee to evaluate proposals for funding for educational research activities

7. Functions of The Academy:

- Meetings:
 - The Academy will sponsor regular quarterly meetings for its members.
 - As the major educational organization that bridges the faculty of the entire School of Nursing, the Academy should work to regularly present campus-wide meetings and discussions on topics of educational interest.
 - Educational research within the SON should be publicized and presented as a means of promoting educational scholarship.
 - Academy members will be expected to attend a minimum of 50% of the quarterly meetings.
 - Outside speakers with regional and national preeminence in nursing education should be periodically sponsored as visiting consultants
 - Eventually, as extramural funding is acquired, an Annual Symposium and/or Guest Lectureship should be initiated, and could be held in conjunction with other Academies of MCG or other schools of nursing.
- Workshops:
 - Fellows of the Academy have expertise in a wide variety of educational, administrative and leadership skills. It is an expectation that each member of the Academy will present professional papers at national or international organization meetings and actively and visibly participate in these meetings/organizations.
- Annual Awards: The Academy may choose to sponsor various faculty awards for educational excellence or educational research.
- Travel awards for faculty to present their educational research at regional/national meetings
- Service on MCG School of Nursing Committees: Academy members should seek out opportunities to serve on major SON Committees, articulating and serving as advocates for educational issues for the Committee members.

8. Benefits of having the Academy of Nurse Scholars in Education at MCG:

- Faculty who are outstanding educators and/or have achieved success in educational scholarship and research will be recognized in a tangible way.
- Faculty with an interest in education will have an organization on campus to help them develop their career interests and serve as a source of encouragement for them to become excellent educators and educational scholars.
- Members of the Academy will form the core of motivated faculty who will serve as mentors, faculty development workshop facilitators, and role models for SON faculty and nursing students.
- Educational research will be fostered through the exchange of ideas and mentoring that an Academy will provide.
- The Academy will provide a tangible opportunity for alumni and others who wish to contribute money and resources to see this aspect of MCG's mission strengthened. With financial support, the following activities can be initiated or expanded:
 - Guest lecturers and consultants can be brought to MCG to provide presentations, workshops, and consultation.
 - Grants for educational research projects can be funded locally to Academy members through a competitive process.
 - An annual "Education Day" can become a regular event, where research is presented, ideas are exchanged, and other activities are offered. This can be held in conjunction with other Academies at MCG or elsewhere.
 - Travel grants for Academy members to present their educational research can be funded.
 - Additional faculty can be added as funding is acquired. Ultimately the Academy could develop or spearhead the development of a Department of Nursing Education within the School of Nursing.
 - During membership as a Fellow, members may place "**Fellow, Academy of Nurse Scholars in Education, Medical College of Georgia, School of Nursing**" beneath their signature on School of Nursing, e-mail and letterhead documents. No acronym denoting Academy Fellowship after a person's name will be permitted.

9. Budget A \$1000 stipend will be provided annually for each Academy Fellow. Additional funds to promote scholarship in education will be at the discretion of the Associate Dean of Academic Affairs and the Academy Fellow's Chair.

10. Inaugural Membership

- Inaugural Membership will be granted to individuals as determined by the initial Organizing Committee.
- Members of the Committee will be granted Inaugural Membership in order to cultivate the growth of the Academy and ensure its solid establishment. These Inaugural Fellows will:
 - o have an initial term of two years, consistent with Academy rules,
 - o be encouraged to apply for follow-up membership consistent with Academy rules,
 - o be provided release time to participate in Academy business, and not be provided a supplemental stipend.

Draft 01/30/08 MMR
Draft 01/31/08 JB
Draft 02/04/08 JH/MMR

THE MCG ACADEMY OF NURSE SCHOLARS IN EDUCATION (ANSE)

MEMBERSHIP APPLICATION CHECKLIST

Name:	Department:
Email:	Phone:
<u>Your emailed application should include the following items (check each box):</u>	
<input type="checkbox"/> Personal Statement	
<input type="checkbox"/> Educator's Portfolio	
<input type="checkbox"/> Three letters of recommendation from faculty	
<input type="checkbox"/> Letter of support of your Department Chair	