

Installing InfoRetriever on your Pocket PC Device

A four-step process:

Step 1: **Confirm System Requirements and Device Operation**

Step 2: **Download the InfoRetriever Installation Files**

Step 3: **Install InfoRetriever to your Pocket PC Device**

Step 4: **Register InfoRetriever**

STEP 1: Confirm System Requirements and Device

Before installing InfoRetriever to your Pocket PC device, be sure you have the proper hardware and memory capabilities:

Operating System: Pocket PC 2002 / 2003

Processor: StrongArm 206 MHz or XScale 200 MHz or higher

Storage: 64 MB or more of internal memory or 64 MB or more of expansion memory (SD / CF / Memory Stick). You must have 50 MB or more of free storage space on your internal or expansion memory to perform the installation. We highly recommend that you install InfoRetriever to your expansion memory card.

- **Be sure ActiveSync is updated** - For more information, visit http://infopoems.com/support/faq_pocketpc.html#activesync.
- **Connect your handheld** - Make sure your Pocket PC device is in its cradle and that a connection to your desktop computer has been established with ActiveSync. The ActiveSync box should say connected. If you will be installing InfoRetriever to an expansion memory card, be sure the card is fully inserted into your device. Check that your expansion card is an actual memory card and not the plastic placeholder that may have come with your device. Ensure the memory card is fully inserted into your device.

STEP 2: Download the Installation Files

If you haven't already, download one of the following files (xxxx represents a version number) from our Web site (www.infopoems.com) and save it to your desktop/laptop:

- IR2004-PPC_xxxx.exe
- IR2004-PPC_no5MCC_xxxx.exe

To access the most recent version, go to www.infopoems.com and click on **Support -> Downloads/Updates**.

If you have a dial-up internet connection, downloading the InfoRetriever installation file might take a long time. For a CD containing the InfoRetriever installation files, email support@infopoems.com.

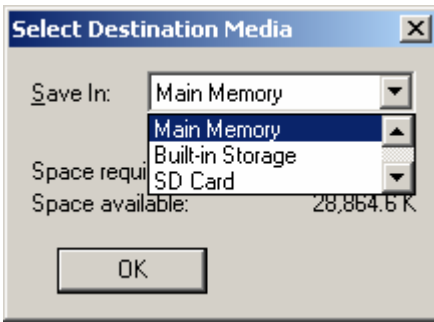
STEP 3: Install InfoRetriever to your Pocket PC Device

- **Run the Installer** - On your desktop computer, locate the InfoRetriever 2004 for Pocket PC installation file.
 - Double-click the file to begin.
 - You will see a Welcome Screen. Click **Next** to continue.
 - You will then see a License Agreement Screen. Please read the InfoRetriever License, and indicate that you accept the license, then click Next to continue. The installer will copy files necessary to perform the installation to your Pocket PC device.
- **Choose Where to Install** - If you have an expansion memory card, you must choose whether to install InfoRetriever to your device's internal memory or the expansion memory card. You will see the following dialog:

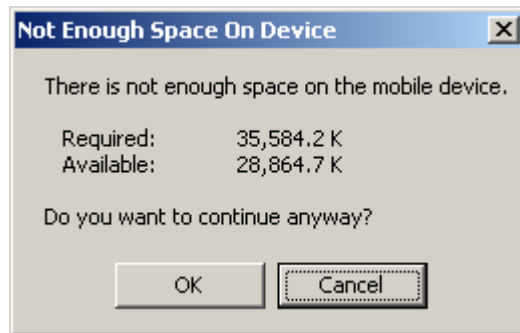


To install to internal memory, select **Yes**. To install to expansion memory card, select **No**. To cancel the installation, select cancel.

If you have selected **No**, for expansion memory, you will see the following dialog:



Select the appropriate item from the dropdown menu. If you do receive this dialog and you pressed **Yes** to install to default location, choose main memory and click **OK**. It is likely that you will then receive the following dialog:



If you see this message, it does not necessarily mean that your device does not have enough space. Click **OK** to continue anyway. If you receive an "Out of Memory" error later in the installation, then you truly do not have enough free internal memory, and you will have to install InfoRetriever to your expansion memory.

- **Transfer Files from your Desktop to your Pocket PC** - While the InfoRetriever files are being copied to your device, you will see a dialog like this:

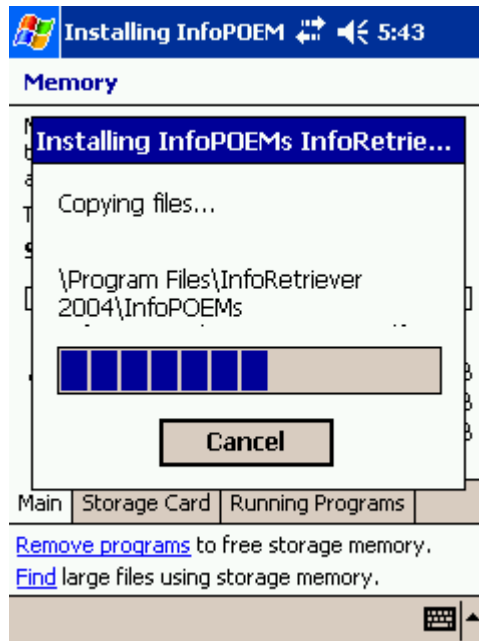


When this stage is complete you will see the following dialog on your desktop/laptop:



Click **OK** and turn to your Pocket PC device.

- **Decompress Installation Files on your Pocket PC** - While the InfoRetriever files are decompressing on your device, you will see a dialog like this:



When this dialog disappears, the InfoRetriever installation is complete.

STEP 4: Register InfoRetriever

All individuals with a paid subscription, or who are affiliated with an institution that has a subscription, must register InfoRetriever. This step is often overlooked and must be done once a year. **If you miss this step, you will only be able to access InfoRetriever for 30 days.** By registering, however, you communicate to your Pocket PC device that InfoRetriever should run for the length of your subscription.

This step will require you to give us your device's Serial ID. Our system will, in turn, give you a license code that that allows you to access InfoRetriever for the duration of the subscription.

- **STEP ONE: Determine your Pocket PC device's Serial ID**

- NOTE: The Serial ID is NOT the Serial Number printed on the outside of your device. The Serial ID can only be found within the InfoRetriever program.
- Open InfoRetriever by tapping on the **IR** icon.
- Select **File -> Register** to display the Registration Screen, and locate the **Serial ID**.

- **STEP TWO: Obtain a License Code**

Individual Subscribers:

- On the InfoPOEMs Web site (www.infopoems.com), click **Online Access** and enter your username and password if necessary.
- Click the **Register** link on the navigation bar to the left.
-
- Select **Pocket PC** from the dropdown menu, and enter your Serial ID in the text box.
- Click **Get License Code**.
- If you have difficulties with the Web page, or if Web registration is not available, send your Serial ID to support@infopoems.com or call 877-633-7636 to request your registration license code.

Institutional Subscribers:

- On the InfoPOEMs Web site (www.infopoems.com), click **Online Access**. You might need to access this page as you normally do the Online Access area of the InfoPOEMs Web site, e.g., with a username and password or a special URL link.
- Click on the **Register** link on the navigation bar to the left.
- Enter your e-mail address and name, select **Pocket PC** from the menu, and click **Submit**. It is important to enter a valid e-mail address, as your code will be sent to the address you provide.
- Enter your Serial ID into the text box, and click **Get License Code**. In minutes, your license code will be e-mailed to you.
- If you have difficulties with the Web page, or if Web registration is not available, send your Serial ID to support@infopoems.com or call 877-633-7636 to request your registration license code. Be sure to indicate your affiliated organization.